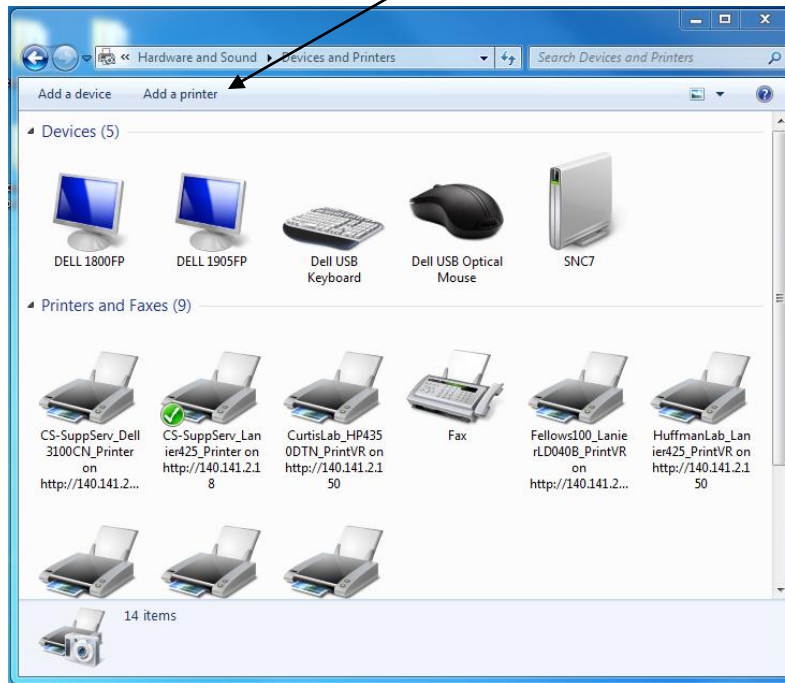


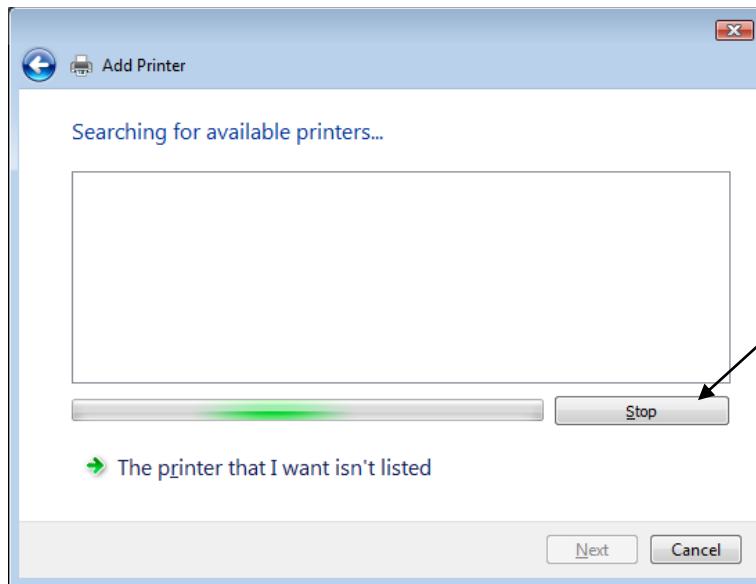
How to Setup Remote Printing for Windows 7

Click the Start button and go to 'Devices and Printers'. In the Window that appears, Click "Add a Printer"



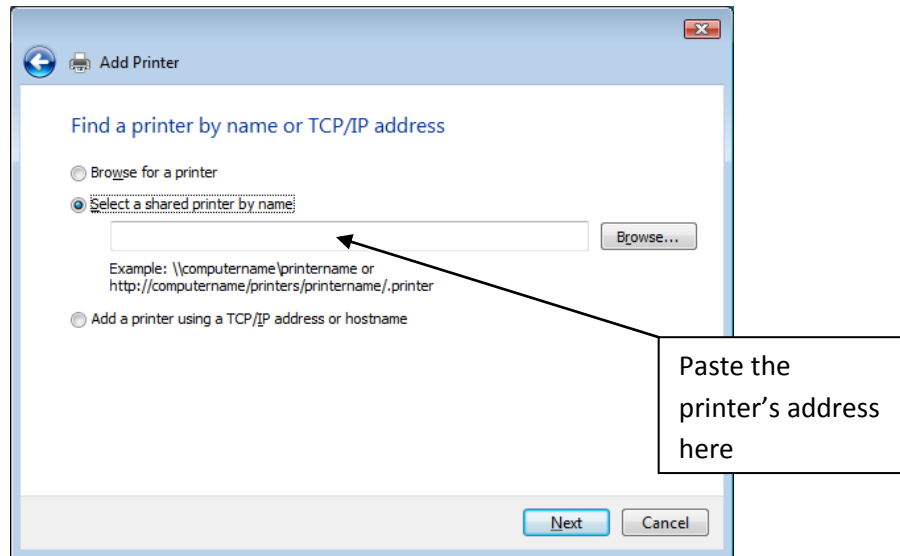
In the Window that appears, select 'Add a Network, Wireless or Bluetooth printer'.

Your computer will automatically scan for printers. Press **STOP** to cancel this search.



Once it has stopped click "The printer that I want wasn't listed"

In the Window that appears, Select the option "Select a shared printer by name" and continue instructions below.



In this box, paste in the information for the appropriate printer. To install multiple printers you must repeat these steps and for each printer desired. The box must contain exactly what is listed here.

CURTIS:

`http://140.141.2.150/ipp/CurtisLab_HP4350DTN_PrintVR`

FELLOWS:

`http://140.141.2.150/ipp/Fellows100_LanierLD040B_PrintVR`

HUFFMAN:

`http://140.141.2.150/ipp/HuffmanLab_Lanier425_PrintVR`

LIBRARY:

`http://140.141.2.150/ipp/LibraryRef_Lanier275HDN_PrintVR`

TAYLOR:

`http://140.141.2.150/ipp/TaylorHouse_HP4014DN_PrinterVR`

Once you have copied this address into the box, click next. The computer will scan for printers and come up with a new box asking you to select the drivers. You have to scroll through the list to get to the appropriate driver. Select it and click **OK**.

CURTIS: HP ---> HP LaserJet 4200/4300 PCL6

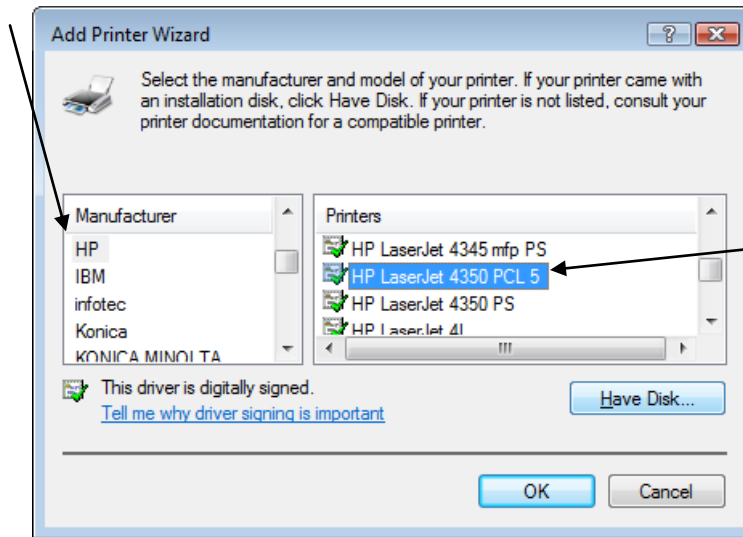
FELLOWS: Lanier ---> Lanier MP 4000B/LD040B PCL6

HUFFMAN: Lanier ---> Lanier MP 2550/LD425 PCL6

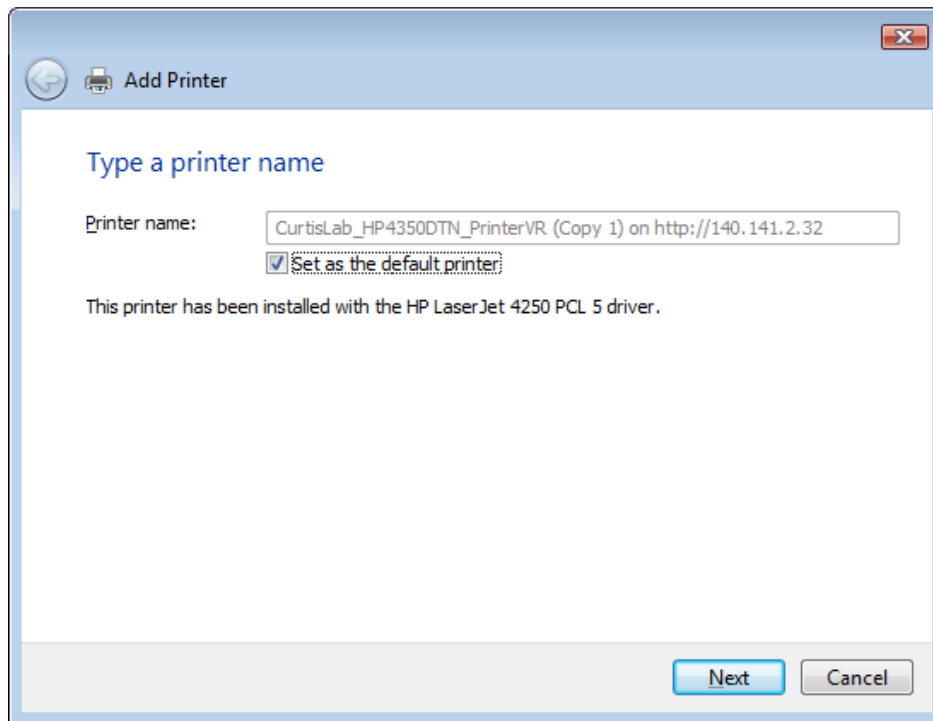
LIBRARY: Lanier ---> Lanier MP 7500/LD275 PCL6

TAYLOR: HP ---> HP Universal Printing PCL 6 (v5.0)*

*Windows 7 may automatically install this driver without prompting you



Once this is installed you will get to another window



You may select this as a default printer. Hit Next to complete the installation. You can release print jobs from virtual print release as usual by going to <http://www.denison.edu/printing>